

This month's edition of Ex-Site looks at the role of the Clinical Sponsors and the Clinical Reference Group, the procurement of the external consultants for the redevelopment, and the journey of the Paediatric/Child and Youth User Group.

Key Project Consultants Appointed



After a comprehensive evaluation and short listing process, the Nelson Marlborough District Health Board has identified the preferred consultant Architect/Health Planner, Quantity Surveyor and Project Manager for the Wairau Hospital Site Redevelopment.

The Architect/Health Planner is Maunsell/AECOM. Maunsell have extensive Health experience across New Zealand including Wairapa, Kaitaia, Timaru, Whangarei and Bay of Plenty DHB. They have a highly qualified and experienced team and an understanding of the unique opportunities available when

developing provincial hospitals. Maunsell recognise that the Wairau Hospital needs to be redeveloped to ensure a modern and sustainable health service is created.

RDT Pacific LTD are the consultant organisation for project management services. This group have a good knowledge of the needs of the Marlborough community and the health service required. RDT Pacific will provide locally based personnel with a comprehensive understanding of the NMDHB requirements. RDT Pacific has extensive understanding of the health sector and has worked on large hospital projects including the Nelson Hospital, Murchinson Hospital and the Wellington Hospital.

The consultant Quantity Surveyor organisation is Maltby Partners. Maltbys provided input into the Business Case to help secure funding for the Wairau Site Redevelopment and therefore has previous experience of the Wairau Hospital and its health care and budget requirements. They have considerable experience in Health Sector including the Kaitaia and Masterton Hospital redevelopments.

The NMDHB would like to warmly welcome these consultants and look forward to working with them on the project for the next three years.

Caption: Consultants meet with Wairau Redevelopment Team. Photo courtesy of The Marlborough Express copyright

Clinical Sponsors and the Clinical Reference Group

The Clinical Reference group provides a clinical perspective to the project at a Hospital-wide level. The desired outcome is an effective clinical contribution to the design of the new Hospital. This group's role also includes the following:

1. To provide clinical oversight to the Wairau Hospital Redevelopment Project to ensure that clinical models of care across the new Hospital are consistent with current and future good practice and clinically sustainable.
2. To facilitate the resolution of conflict between different departments on proposed new models of care.
3. To provide clinical advice on Patients flows and access, Co-locations and synergies between departments, Clinical safety matters, Maintaining infection control principles, Standards

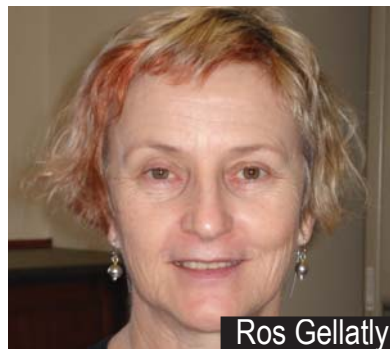
and quality

4. To provide clinical leadership to the Re-development Project and work with clinical colleagues to achieve the desired vision.

Ros Gellatly (Primary) and Rick Wilson (Secondary) were nominated as co-chairs of the group. Rick viewed the development as 'a once -in-a-lifetime opportunity to help with a project of considerable importance to my place of work and to the community we all are part of. A number of fundamental issues attracted me personally. The long term security of the facility, improving the

range and standard of health Care offered and developing improved relationships with other providers'.

Ros felt that the project was 'exciting because it is the DHB making real the desire to have better primary care and secondary care integration'. Ros noted that 'the response from the PHO Board to be part of the integration group is really positive. Ros remains highly passionate about this integration and sees her GP liaison role and this role as complementing each other.



Ros Gellatly and Rick Wilson



Child and Youth User Group



The Child and Youth user group have been progressing well with their model of care and describing how their service will run in the future.

Throughout site redevelopment user group meeting discussions, the group agreed to change their name from Paediatric User Group to Child and Youth.

This change was made to promote a facility in which children and young people will be treated in an environment that is developmentally appropriate.

Ken Dawson, Paediatrician described the site redevelopment process as 'a good opportunity to grasp some of the unmet needs of children'.

Some of the issues that were highlighted in their model of care include:

- Difficulties maintaining a sustainable critical mass of expertise in the area of child and youth health

with regard to nursing and medical staff, threatening the viability of a small inpatient unit.

- The service has an increasing focus on integrated outpatient and community outreach care and there will continue to be a need for Child and Youth assessment and inpatient care for acute and elective treatment

The Child and Youth user group have agreed that their preferred collocation would be with the Emergency Department so that child friendly areas can be shared.

In the future model, neonatal cots will become a part of the Child and Youth

facility and will be cared for by the Paediatric nursing staff.

The user group members have also shown a keen interest to ensure that the new Wairau Hospital is consistently and appropriately child friendly, particularly in waiting areas. Their model of care is evolving well and is running alongside a District Wide Paediatric Review.



Sue Winstanley and Dr Ken Dawson

Non Clinical User Groups Established

Throughout the past few months, there has been an intense focus on the Clinical requirements and their models of care. As we move into the next phase of site redevelopment, we have now initiated information gathering for the Non Clinical groups around the hospital. There has been a natural and deliberate lag between the Clinical and Non Clinical requirements. To establish the location of these services, it was important to understand the Clinical collocations initially before progressing to the other services.

On Monday 4th of December, a briefing was held for all Non Clinical representatives. Martin Ridgway (Project Director) gave a comprehensive overview of the project and the input expected of the representatives. John Williams (Consultant and previous Nelson Property Manager) has been brought on board to assist with the requirements process and sourcing more information.

All of the Non Clinical services have produced draft 'Service Requirement' papers which will be reviewed by the Internal Coordination Group and then presented to the Architect/Health Planners. The Non Clinical Service streams covered include:

- | | | |
|----------------------------|---------------------------------|----------------------------------|
| • Business Support | • Main Entrance/Medical Records | • Spotless Services |
| • Chaplaincy | • Maori Health | • Stores |
| • Human Resources | • Medirect/catering | • Transport and Security |
| • Infection Control | • Planning and Funding | • Occupational Health and Safety |
| • Learning and Development | • Property and Facilities | • Whanau Room |
| • Library/ Volunteers | • Public Health | • Body Store Room |

Steering Group Update

The Steering Group has been established as part of the Site Redevelopment program to provide governance and representation of the Senior Leadership Team of the project. The Steering Groups main objectives include:

The successful management and delivery of the Business Case and the Project within budget, on time whilst achieving agreed goals and benefits ▪ Determining the Models of Care, the finalizing of design and cost, and where necessary making recommendations to the CE/ Board ▪ Selection of Consultants and Contractor ▪ Overseeing the work of the Internal Coordination Group ▪

"Paving the way" for the project – identifying and mitigating barriers ▪ Defining the parameters for the project ▪ 'Stretch-thinking' to ensure gains are maximized ▪ Recruitment of the project team.

The team is made up of the COO, Project Director, Director of Nursing, Chief Medical Advisor, Clinical Sponsors, Board Member, Finance and Organisational Development General Managers, Wairau Liaison Manager, Board Secretary, Iwi Health Board, Change Manager and the external consultants

The Wairau Site Redevelopment Team, would like to wish all of the Wairau Hospital Staff a very Merry Christmas and a Happy and safe New Year