

## Corridor Connection

The corridor which links the first completed stage of the redevelopment to the rest of the hospital campus has been completed.

External access to the hospital from the main public car park for staff, patients and visitors is through either of the two temporary entrances, Entrance A and Entrance B.

The corridor can be accessed internally from outside the Laboratory on the western side of the campus, and outside Clinical Records on the eastern side of the campus.

Until the redevelopment's third stage is completed in late 2010, the corridor will only provide a thoroughfare across the hospital campus.

Construction continues on the northern and southern sides of the corridor.

The new corridor was blessed in a dawn ceremony on Monday, 24 May 2010.

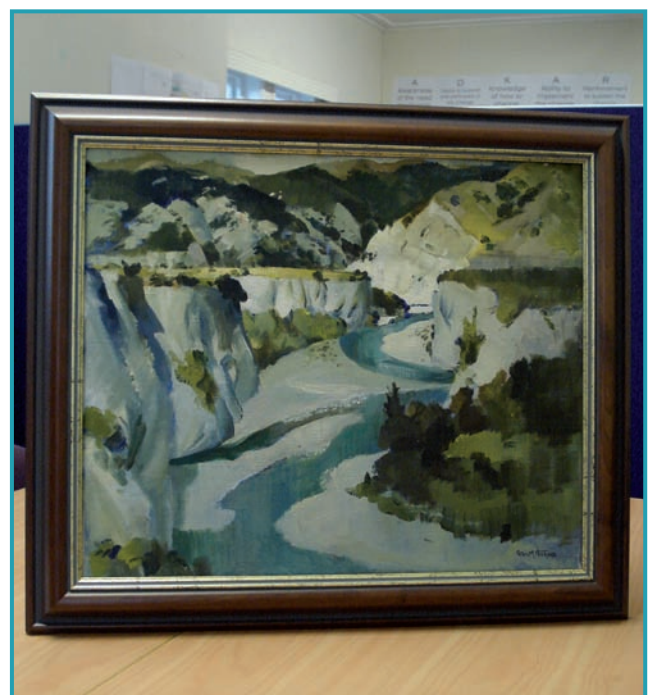
## Solve the Mystery

An aura of mystery hangs over the origin of this artwork by acclaimed New Zealand artist Peter McIntyre.

Most recently hung in the former boardroom in the administration building of Wairau Hospital, a number of conflicting stories regarding the artwork's history have reached the ears of the redevelopment project's Community Liaison Group.

The little that is known includes the fact that the painting has been the property of NMDHB at least since Glynis Baldick's term as Chief Executive (1988-2004). The composition is believed to be of the Awatere Valley. It is painted in oil, and is framed in the style of the 1970s.

The Community Liaison Group's art subcommittee recently completed a full inventory of the hospital's artworks, including recording the artists' names, the year of origin of each artwork and the donors' name, if known. If you are able to assist the Community Liaison Group with completing the inventory for this artwork, please contact the Project Administrator on 520 9859.



## Watching Over Wairau

Blenheim resident Warren Murray has been a regular visitor to the construction sites at Wairau Hospital throughout the redevelopment.

A familiar face to many hospital staff, Warren can usually be found wherever the most exciting activity is occurring. "The foyer of the Arthur Wicks building is a good spot at the moment as it looks out over the new construction site", says Warren.

"He is very informed about the project's programme and occasionally reminds us of our deadlines," says Matthew Findlay, Site Manager for Hawkins Construction. "He keeps us on our toes."

Warren says the most interesting parts of the development so far have been the demolition of both the Clinical Services block and extension to the Nurses' Home, but he is particularly looking forward to the demolition of old Ward 5 in November 2010.



## Dental Service Move

The Dental Service has relocated to a new temporary location in the former Ward 5.

Dental Service clinics have been operating out of the former Surgical Outpatients consulting rooms in the Clinical Services block, which is currently being demolished to make way for the new Maternity and Child and Youth facilities.

The first clinic in the new location took place on Tuesday, 25 May 2010.

A location for a new permanent Dental facility is currently being considered.

## Integrated Theatre Equipment Installed

Installation of the digital equipment for Wairau Hospital's new state-of-the-art integrated operating theatre is underway.

In the technologically advanced integrated theatre, large pendants hanging from the ceiling support all of the equipment required by the surgical team within the sterile field. This includes flat panel high resolution monitors which can display any image of the surgical field that the surgeon wishes. All leads and cables are contained with the pendants, and each pendant can be adjusted to suit the varying needs of each individual surgeon.

The theatre will be handed over to staff in early June 2010.



## Final Goodbye to Clinical Block

The remainder of the Clinical Services block was decommissioned on Monday, 24 May 2010.

The building, which housed the former Emergency and Radiology departments, has been operating as a temporary thoroughfare for hospital services during the construction of the hospital's new east-west main corridor.

NMDHB's Kaumatua and Chaplain Graeme and Mabel Grennell led a small group of staff through the empty rooms, past walls decorated with messages of farewell from the Emergency and Radiology department staff.

Kaumatua Graeme Grennell praised the hospital staff whose days were filled with "love and heartbreak". Special *karakia* (prayers) were said in the Emergency Department resuscitation room for those that passed away, and for the staff that did their best to provide comfort for them.

## Planting Planned for Main Entrance

The redevelopment project's Community Liaison Group members Mo Sutton, Carolyn Ferraby and Kaye Green have been working with the project's landscape architect to develop a planting plan for Wairau Hospital's new main entrance. "We feel strongly that the main entrance should be landscaped in a way that softens the lines of the building and creates a welcoming first impression," says group member Mo Sutton.

Mo, Carolyn and Kaye have a vision of a garden which is focused on form and foliage, and is seasonal to provide colour and structural interest at all times throughout the year. Scent is very important, says Mo, as is screening between the main entrance and the adjacent café courtyard.

The group has recommended a number of plants for inclusion in the garden design. These include pittosporum, magnolia, bergenia, hellebores, coprosma, astelia and cordyline, which are commonly known as cabbage trees.

The main entrance is due to be completed in late 2010.

## Countdown to Stage Three Construction Completion: Five Months

Queries or Comments? Contact the Communications Coordinator on 03 520 9859 or email [wairau.redevelopment@nmhs.govt.nz](mailto:wairau.redevelopment@nmhs.govt.nz)