



Flavours is open between 8am-5pm on weekdays, and 9am-4pm on weekends

Café Opens

Flavours, the Wairau Hospital café, opened on Monday, 13 December 2010 in its new central location adjacent to the main entrance. The new outdoor courtyard area is sure to be popular with visitors and staff alike over the summer months.



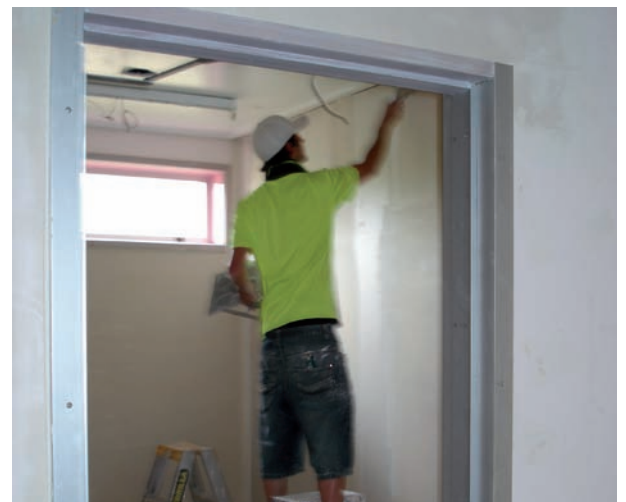
Renwick School Colours Corridor

A group of Year 7 and 8 girls from Renwick School have brought a splash of colour to the corridor outside Maternity.

Inspired by a 'My Family' theme, the students have decorated twelve 20cm x 20cm canvas blocks which were generously provided by Warehouse Stationary.



Years 7 and 8 Renwick School girls show off their 'family' themed artworks outside the Maternity ward



Stopping up the walls in preparation for painting

Stage Four Well Underway

Stage Four construction is progressing well. The stripping out of the clinical elements from the former Maternity and Paediatrics wards has been completed, and alterations are underway to adapt the existing layout for the new Adult Mental Health and Addiction Services facilities.

Staff working in these departments will be given the opportunity to view the new facilities on a weekly basis as soon as the alterations to the floor plan are completed.

Project Director's Summary

The project team takes a collective deep breath as 2010 comes to a close and the holiday season approaches. We look back on the past year as a time of intense activity, but one that engenders a strong sense of accomplishment. Two more stages of the redevelopment have been completed, and the fourth and final stage has commenced construction. The combined commitment, enthusiasm and plain hard work of hospital staff, the project team and the contractors to achieve these goals is to be commended.

There was cause for celebration early in the year with the completion of Stage Two in February. The month flew by in a busy hum as seven individual services relocated into their new permanent locations. The Arthur Wicks building is barely recognisable after transforming into the Emergency department and the Acute Assessment and High Dependency Units. Close to 400 people gave their unreserved approval of the new look at a community preview.

In March, the bulldozers and wrecking ball arrived on site to demolish the clinical services block and clear space for the construction of Stage Three facilities. With the clinical services block gone, construction of the east-west main corridor commenced, effectively splitting the campus into two halves. Running straight through the middle of the new construction zone, the 63 metres of uninterrupted corridor became fondly known as the 'golden mile'.

A state-of-the-art, fully integrated, high definition digital operating theatre was handed over to staff in June. At the time, it was the only one of its kind in a public hospital in the country.

The completion of Stage Three construction in November revealed the final layout of the redeveloped campus. As the hospital's new main entrance opened, a multitude of other entrances were finally able to be closed, resolving one of the original concerns regarding security that contributed to the necessity for a redevelopment.

The community was invited back to Wairau to preview the new Paediatrics, Maternity and Outpatient facilities prior to occupation in November. In the project's most industrious period to date, during the following three weeks, a further eight hospital services relocated, and one blessing and two decommissioning ceremonies took place.

Other significant hospital buildings have been farewelled during 2010. In April the focus of the demolition crew shifted to the old extension to the Nurses Home. Constructed in 1943, the building had been out of use for well over a decade. While many former and current nurses shared fond memories of their time living in the home, the general consensus was a sense of relief that an unfortunate eyesore had been removed from the campus.

In November demolition began on the final buildings slated for removal as part of the redevelopment. The majority of the old wards on the eastern side of the campus had been in use from their original occupation in 1943 right through to just a few days prior to the demolition commencing.



Martin Ridgway, Project Director; Susannah Findlay, Project Administrator and Sue Morris, Change Manager

We said goodbye to two members of the project team in 2010, and welcomed a new face on board. Part-time migration and furniture, fittings and equipment coordinator Emily McCallum was farewelled at the end of May, shortly before the arrival of her second baby. David Hobern, project manager, then departed for a new role in Christchurch in mid-November. David has been replaced by Richard Swallow, who will see the project through to the completion of Stage Four in February 2011.

There is no doubt that the community liaison group has fulfilled their purpose this year of creating connections between the hospital and the community, and channelling contributions to the atmosphere and surroundings of the new facilities.

To mention just some of their successes in 2010, they have been responsible for facilitating the donation of a significant number of new artworks, many by local artists, now adorning the walls of the new facilities for both staff and patients to enjoy. The AT&R ward enjoys a purpose-built mobility courtyard for rehabilitating patients; and the main entrance boasts a magnificent set of sand blasted glass panels depicting the Wairau landscape.

Stage Four is progressing well and there is no doubt the next few months will fly by. It is an exciting time for the staff involved; we look forward to your continued support during this final stage.

The redevelopment has reached every corner of the hospital campus this year. Whether directly involved or simply impacted by the project in 2010, our sincere appreciation goes out to all. Your contributions have been invaluable in creating the greatly improved hospital we enjoy today.

- Martin Ridgway, Project Director



The project office wishes everyone a very merry Christmas and a safe and relaxing holiday season.

Ex-Site will be back with monthly updates in 2011.

Countdown to Stage Four Construction Completion: Eight Weeks

Queries or Comments? Contact the Communications Coordinator on 03 520 9859 or email wairau.redevelopment@nmhs.govt.nz