



Radiology Comes Together

One month on from the occupation of their new facilities, the Radiology department Team Leader, Philip Thomas says the co-located services are beginning to gel.

“Working alongside each other has created a more team based atmosphere and work attitude.”

The new facilities for X-ray and CT scanning have been particularly successful. Philip says manoeuvrability was an issue in the former facilities. However, the inclusion of wider turning spaces, and three large X-ray rooms and bed holds in the design of the new facility has provided greater flexibility and service continuity.

One reception point and waiting room means patients with CT scan appointments no longer have to wait in a draughty corridor. All of the Radiology services benefit from closer positioning to the Emergency department. These services include ultrasound, mammography, and nuclear medicine.

While there were initial difficulties with way-finding, it is expected that this will become easier as the community becomes familiar with the single department arrangement, says Philip.

The waiting area and corridor décor is enhanced with the addition of four framed Paul Cessford prints. Images of everyday objects such as a banana or tulip are produced using a mammography machine. The prints were selected and purchased by the project's Community Liaison Group. “The prints not only look great, they are relevant for our department,” says Philip.

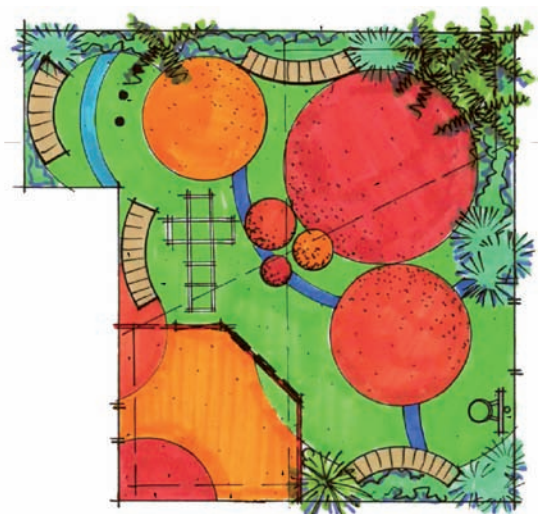


Concept Received for Children's Courtyard

A concept design for the Paediatric department courtyard has been presented to staff and representatives of the community. The design features mounded and hollowed areas in soft fall surfacing for play with toys and balls; fixed 'play spheres' for climbing; a hopscotch outline set into the surface and a mini basketball hoop. The courtyard concept also includes seating, a fenced off toddlers' zone, wall murals and shade sails.

“The concept design for the courtyard has not only met our design brief, but exceeded our expectations. With just a few tweaks to be made, we hope to progress this design into reality in our new facilities,” says Sue Smart, Charge Nurse Manager, Paediatrics.

While the redevelopment project's budget includes an allowance to complete the basic courtyard layout, it is unable to cover the full costs of implementing the concept design. The additional enhancements to the courtyard will need to be funded through donations and fundraising activities, which will commence in April 2010. If you are interested in assisting with fundraising for the children's courtyard, please contact John Ealand, 03 578 5987, or ealand@xtra.co.nz. The Paediatrics department will move to new facilities in late 2010.



-  Rubberised soft fall surfacing - multi coloured
-  Timber semi-circular seating
-  Proposed Play Spheres
-  Proposed Planting - soft and non toxic but textured and interesting

Old Nurses Home Demolition

Demolition of the extension to the former Nurses' home has commenced. While not originally part of the redevelopment project's scope, an arrangement has been made with the incumbent demolition contractor to remove the building while they are currently on site completing the demolition work required for Stage Three of the project.

The extension, constructed in 1943, was decommissioned on 12 April 2010 in a ceremony led by NMDHB Kaumatua Graham Grennell. Mr Grennell noted during his address that 'the *wawata*, the hopes and dreams of the young women who lived [in the Nurses' Home] can still be felt within the walls'. Completion of the demolition is expected to take approximately nine weeks.



Change Rooms Refurbished

Wairau Hospital staff are enjoying refurbished change and shower facilities. Located in the basement of the Arthur Wicks building, the change rooms have benefited from new vinyl flooring, freshly painted walls, brand new toilet and shower fixtures, large mirrors and a suspended ceiling which covers the previously exposed concrete slab and services pipes.

Staff Visit New Theatre

Visits for Theatre staff to the construction site of Wairau Hospital's new third theatre have commenced, allowing staff to familiarise themselves with the new layout of their department. Construction is expected to be completed at the start of May 2010, at which time installation of the state-of-the-art fully integrated digital equipment will commence. Staff will complete a comprehensive training programme before the new theatre opens.



Surgical Services Coordinator Maureen Leggett and Charge Nurse Manager Monette Johnston admire the interior of Wairau Hospital's new Theatre.

Landscape Concepts Considered

Landscaping concepts for the courtyards that will be constructed during Stage Three of the redevelopment have been received and are currently being considered by the project team and the Community Liaison Group. The concepts have been based on variations of the Marlborough landscape, from the completely natural to the formal, historic and public gardens of Blenheim. Use of natural stone characterises the designs.



At left: Concept featuring hedges with sculptural and textural planting beds with surrounding natural Koromiko stone borders

Many Thanks

A special thanks to Kaye Green and Carolyn Ferraby of the project's Community Liaison Group for the beautiful flower arrangement that graces the Wairau Hospital Chapel.

Thanks also go to group member Joan Sorensen who has generously donated her time each month to recycle the waiting room magazines.



Donations of quality, monthly issue recent magazines for men and women are gratefully received and can be dropped into the Project Administrator between 7.30am and 4.30pm Monday-Friday, telephone 520 9859.

Countdown to Stage Three Construction Completion: Six Months

Queries or Comments? Contact the Communications Coordinator on 03 520 9859 or email wairau.redevelopment@nmhs.govt.nz