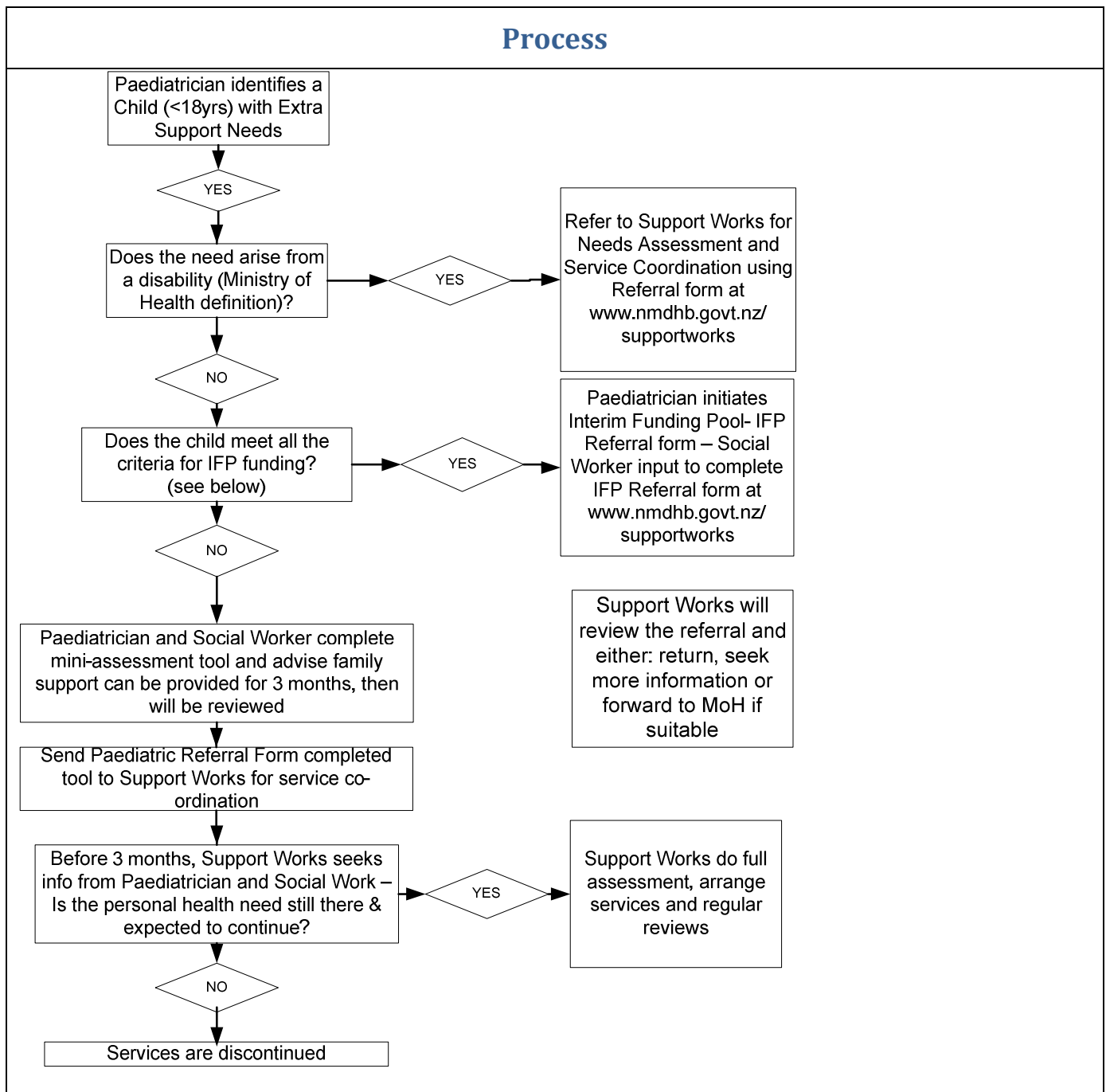


# ACCESSING SUPPORT SERVICES FOR CHILDREN WITH HIGH EXTRA NEEDS

## Process



**IFP eligible clients** are people who meet **all** of the following criteria:

- are aged under 65
- are currently not eligible for Ministry funded disability support services or DHB funded longterm support services
- have one or more chronic health condition(s) that is/are expected to continue for six months or more
- have high need for long-term support services. (e.g. needing assistance with ADL at least once a day for five days a week to remain safely in their own home, or needing residential care; increasing need and safety issues.)
- do not have an informal support system (family whānau) or the caregiver is under considerable pressure and their ability to support the person is compromised.