

Other useful info

Riding for the disabled
www.rda.org.nz/

03 5466366

Just Gymnastics run 'Josh's class' gymnastics for physically disabled children aged 1 to 8 years.

03 5466013



A Guide for Parents of Children with Disabilities



This booklet belongs to you and your child

Chrissy Tamihana
Student

Post Graduate Diploma in Family and Social Work
University of Otago, Dunedin

It provides information especially for parents and caregivers of children with special needs, but will also be useful to anyone who works in this area, in the Nelson district. Many of you have found it difficult to find your way through the system and have felt that you are struggling on alone.

Hopefully this will provide some useful information for you and your family as you discover the whole network of parents, professional support people, community organisations and support groups that are available to support you to meet your wide range of needs.

It was compiled by a Post Graduate Social Work student in conjunction with parents and staff of the Child Development Service. Please feel free to feedback your comments to

Hilary Exton
Team Leader Child Development Services
Nelson Marlborough District Health Board
DDI (03) 546 1211
hilary.exton@nmdhb.govt.nz



NZ Organization for Rare Disorders

www.nzord.org.nz

Open Home Foundation 03 545 9172

Paediatric Secretaries 03 5461210

Parent 2 Parent 03 5468973

nelson@parent2parent.org.nz

Patient Travel Coordinator 03 5461919

Plunket 03 539 4323

Plunketline 0800933922

Presbyterian Support 03 5469812

Skylight

www.skylight.org.nz

Special Education School Transport

www.minedu.govt.nz

St Johns 0800 000606

enquiries@stjohn.org.nz

Stopping Violence Services 03 5483850

Strengthening families 03 5391170

sf@nelsonpho.org.nz

Support Works 03 5463980

Tautoko Services 03 5467038

jford@clear.net.nz

Te Kahui Hauora o Ngati Koata 03 5468018

Te Korowai Trust 03 5475958

Te Pukenga Hauora 03 5461415

Tui.Boyd@nmhs.govt.nz

Te Rapuora Health Services 03 5469997

The Bus 03 5394107

WEKA

www.weka.net.nz

Whakatu Marae 03 5484257

Work and Income

www.workandincome.govt.nz

Index

Email/Website	Phone
Autism NZ	03 5432465
Barnados kate.reilly@barnados.org.nz	03 5390019
Care Solutions	03 5474830
Child Adolescent Mental Health Team	03 5461230
CCS Disability Health Worker www.disabilityaction.org.nz	03 5484479
Child Development Services hilary.exton@nmdhb.govt.nz	03-5461211
Child Youth and Family Services	0508 FAMILY
Dyspraxia Support Group	03 5403274/ 03 5403342
Early Intervention Playgroup	03 5486840
Early Intervention Service (GSE)	03 5463470
ENABLE www.enable.co.nz	0800 171981
Family Start	03 5458931
Family Works	03 5469812
Fifeshire foundation	03 5469670
Group Special Education (GSE) www.teamup.co.nz	03-5463470
Health and Disabilities Advocates	03 5444116
Health And Disabilities Commissioner	0800112233
Healthline	0800611116
HealthPAC	0800 281222
IDEA Services	
IHC www.ihc.org.nz	
Linmark Services www.linmark.co.nz	0800546627
Lotteries grants www.dia.govt.nz	
Manuka House	03 5482509
Max (equipment technician)	0272437641
Nelson Kindergarten Association	03 5467613
Nelson Women's Refuge Crisis Line 0800 163344	03 5483353

Where to go.....

IF

	Page
• You are worried about your child's development	4
• You are worried about your child's behaviour	5-6
• You want more info. on your child's disability	7
• You have issues with the specialist equipment provided	8
• You have transport issues	9-12
• You want a support group or to support others	13-14
• You need an advocate	15
• You need help working out what you are entitled to	16-17
• You are struggling to cope, need to access respite for your child	18-19
• You have health concerns for your child	20
• You have concerns about your child starting pre-school/school	21
• You want to be prepared for the Transition to Adult Services	22-23
• You want support for your siblings or baby sitters/ carers	14
• You might qualify for a mobility parking permit	12
• You are concerned about behaviour in the family home	24
• Useful Contact Info	25
• Index	26

Some other useful info...

You are Worried about your child's development

Your Doctor or Paediatrician

Would be helpful and appreciate hearing your concerns.

Your Plunket Nurse and or Family Start Worker (0-5 year olds)



Will help you determine where to take your concerns.

Your pre-school teacher or teacher

Will know where to refer you.

Child Development Services

Based at both Nelson and Marlborough Hospitals, Child Development Services assist children, 0-16 years with neurological and/or developmental problems. They arrange assessments and develop family focused goals and intervention programmes in partnership with you and your child. Equipment as required to meet your child's needs is also arranged. For children under 5 years they offer the "complete package" They have a Multidisciplinary team made up of

- Team Leader
- Speech-Language Therapist (up to 3 years)
- Disability Support Social Worker
- Physiotherapist
- Occupational Therapist
- Visiting Neurodevelopment Therapist

Your paediatrician or Doctor could/will refer you.

Ph 03 5461211 www.nmdhb.govt.nz

Early Intervention Team

This team is made up of representatives from Group Special Education, Paediatricians and Child Development Services who will be able to assist your child access services and help develop a plan for your child.

Your GP or paediatrician will be able to refer you if appropriate.

My Contacts List

	Name	Phone
<u>Health and Medical Concerns</u>		
Doctor
Pediatrician
Paediatric Secretaries	Carol & Tonia	03 5461210
Other specialists

<u>Needs Assessment and Service Coordination</u>		
Support Works Case Worker
<u>Wheelchair & Equipment Repairs</u>		
Repairs at Workshop	Max	0272437641
94/96 Waimea Road, Nelson		
max.biggs@nmhs.govt.nz		
<u>Child Development</u>		
Physiotherapist
Occupational Therapist
Neurodevelopment Therapist
Speech Language therapist
Social Worker
<u>Mental/Emotional Health</u>		
<u>Child Adolescent Mental Health Service</u>		
Counselor
<u>Family Well-being</u>		
Support
Childcare
Home support
Respite caregiver
<u>Education</u>		
Group Special Education
Early Intervention Teacher
Teacher Aide
Speech Language Therapist
Physiotherapist
Occupational Therapist
Hearing Advisor
Special needs teacher

You are concerned about behaviour in the family home

Families can be under stress at the best of times.

If you are concerned about **violence** in the home, then please talk to someone. **Bullying and violence** does occur in homes, schools and the community across NZ and a quick response is needed to ensure safety for children and adults.

The **Disability Support Services Social Worker** from Child Development Services can help you put safety measures and strategies in place.

Ph. Lisa on 03-5461884

Child Youth and Family Services would be concerned if there are safety concerns with your child or children. Please remember that they are available to help and that their focus is to support families to do the best for their child. Sometimes they can put support in place that is not available elsewhere.

Ph. 0508 FAMILY

0508 326459



Tautoko services will help you with a behaviour plan if your child has difficult behaviour and an intellectual disability.

Email: j.ford@clear.net.nz

Ph. 03-5467038



Stopping Violence services

124 Vanguard Street

PO Box 896

Nelson

Ph. 03 5483850

The Nelson Women's refuge

National Crisis Line- 0800163344

Nelson- 03 5483353

Marlborough- 03 5779939

Marlborough Crisis- 03 5209999

You are worried about your child's behaviour

Your Paediatrician

- You could talk this over with your paediatrician or your doctor.

Tautoko Services

- Support all people with an **intellectual disability** whose behaviour challenges, to lead valued lives in the community. Referrals may be made by individuals, family, whanau, service providers, by phoning the local office.

Email j.ford@clear.net.nz

Nelson Ph. 03-5467038

Ph. 03-5468370



Family Works

- Social workers or counselors are available to assist you with **parenting issues**. They employ a number of social workers in schools and kindergartens. They can help you access appropriate help. Mentoring for children 8-12 years.

Email nelson@psusi.org.nz

Nelson Ph. 03-5479350



CCS Child Youth and families Coordinator

- May be able to assist with parenting issues for you and your child.

Contact: Jenny on 03-5484479



Early Intervention Services

- Are available from the time your child is born until they are settled in school from the Ministry of Education, Special Education Services. If you think your child needs extra support, talk to an educationalist at the Nelson GSE (Special Education) Office, 19 Haven Road, Nelson.

Website www.teamup.co.nz Email enquiries.nelson@minedu.govt.nz

Ph. 03-5463470 Fax. 03-5391501

Barnardos

- Offer a home based support service, including behavioral management based on the needs of the child. They also offer social skills groups in various schools.

Ph. 03-5390019 Email: kate.reilly@barnados.org.nz

Nelson Kindergarten Association SKIP programme

- For children in pre-schools and kindergarten, the skip behaviour management programme can be helpful for your child.

Ph. 5467613 or 5450228



Te Kahui Hauora o Ngati Koata Trust

- Run a Positively Praiseworthy Parenting Programme. They also have a homebased support service called Mahi Awhi Kainga. They can help with child behaviour problems, support and advocacy, help families make positive changes and help with parenting difficulties.

Contact: Sue Hippolite (social Worker) Ph. 035468018 0274888283 Email:

socialworker@koata.iwi.nz

Open Home Foundation

- Offer child centred interventions. Help for parents and their relationships with children. Also anger management on an individual basis.

Contact: Glenda Carnegie (service manager) Ph. 03-5459172

Te Rapuora Health Services

- Run a Maori Disability Support service to ensure Maori with disabilities have an improved level of independence. This service includes assessment, treatment and rehabilitation, service coordination: home support/ career relief services. Ph.03-5469997

Family Start

- Provides intensive, home-based support services for families with high needs.

They have a support worker who specialises in supporting families with children with disabilities. You can enroll for support in the first year of your baby's life or if you have a child with disabilities and are having another baby. Ph. 03 545 8931



IDEA Services (IHC) offers a variety of residential choices as well as vocational services aimed at maximising people's participation in society. For further information contact IHC (Ideas).

Nelson Tel 03 548 4229 Blenheim Tel 03 578 0949

IDSS

(Intellectual Disability Support Services) are a division of Nelson/Marlborough Health Board. They provide a range of residential support services depending on the individual's needs. They also provide Day services and Respite Care. For further information contact:

Nelson Tel 03 546 1671 Blenheim Tel 03 520 9999

NZ Care Group

- is a division of HealthCare NZ. They provide residential services with the aim of giving client's as much autonomy and control in living their day to day lives as possible. They also provide Activity programmes and offer Supported Independent Living services. For further information contact Toll free 0800 692273.

Neighbourhood Connections

- part of Tautoko Services.

They provide a service for people who want to live in their own place or their family home with support.

A Support Worker is provided to assist in doing the things that a person may need help with. For further information contact: Nelson Tel 03 545 7499 Blenheim Tel 03 577 9094

You want to be prepared for transition to Adult Services

If your child is about 15 years old and still receiving services from Child Development Services, it would be time to talk with your therapist about the transition to adult services.

From the age of 16 years your child will move out from under the paediatric services to the adult services, which are provided by Allied Health in the main part of the Hospital.

Any Housing, wheelchair and equipment issues will then be handled by adult services as well as Physio, Social work and Occupational therapy assistance.

Ministry of Education provided services however can continue working with your child until age 21 years.

There are a number of **Community Organisations** that may assist with the transition process as well.

Workstar

To promote the Inclusion of people with disability in the community through Supported Employment.

Workbridge Incorporated

Workbridge Inc. is a free service to people with disabilities who want to find work.

Te Ara Mahi

Employment & Training Support Service for Tangata Whaiora/people with mental illness with offices in Nelson and Richmond- also serving Motueka and Golden Bay.

Work and income

Provide financial support.

At the age of 16 your child may qualify for an Invalids Benefit.

Residential/Supported Independent Living Services

* many of these services are dependent upon Support Works (the needs assessment agency) for funding.

You want more information on your child's disability

Your Doctor or Paediatrician

- can inform you about your child's disability and where to get more information.

Parent to Parent

This is a support and information network for parents of children with special needs

Website www.parent2parent.org.nz

Email nelson@parent2parent.org.nz

PO Box 1164

Nelson 7040

Ph. 03-5468973

Tollfree 0508-236236



NZ Organisation for Rare Disorders

This website has a comprehensive database of different disorders and a match-up service for parents.

Website www.nzord.org.nz

PO Box 38-538, Petone

Ph. 04-5667707

Weka

A disability information service.

The Weka website contains information on financial issues related to having a child with a disability.

The website is maintained by Enable New Zealand.

Call Enable free on 0800 171 981

Website www.weka.net.nz



IHC

This site has a library and information service

Website www.ihc.org.nz



CCS Disability Action

Run a support service for parents of children with disabilities and disabled adults. They have a National library

Website www.ccsdisabilityaction.org.nz

Contact : Jenny 03-5463470



You have issues with the specialist equipment provided

You may be eligible for specialised equipment if your child has a disability that will last over 6 months and result in a reduction of independent function to the extent that ongoing support is required and they are not an ACC claimant.

House alterations needed

Assessment will be done by your occupational therapist who will write a report for **Enable**, the Ministry of Health funding body for equipment for people with disabilities and adaptation of environments.

Callfree on 0800171 981

Website: <http://www.enable.co.nz>

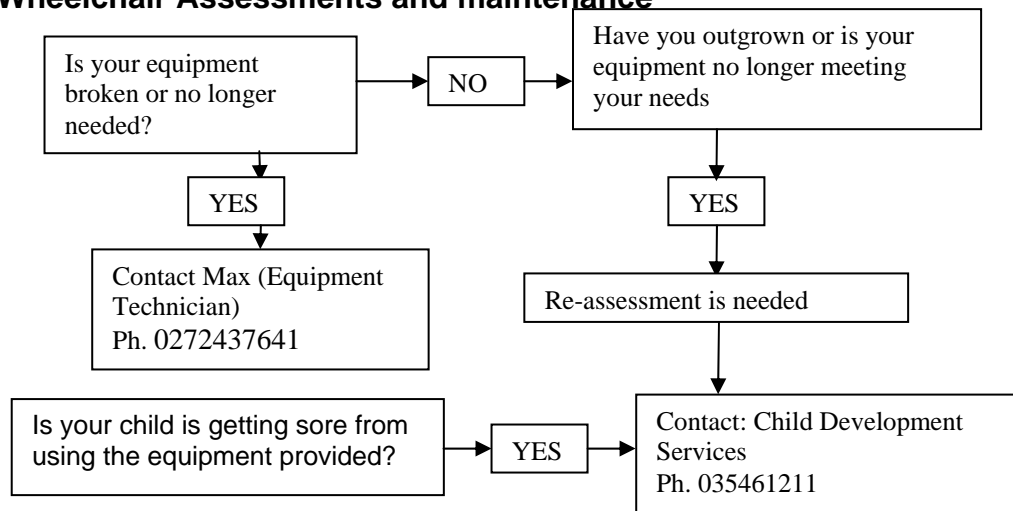
Vehicle Alterations needed

Contact your Child Development Services team who will write an application form to enable in order to arrange an assessment by a local provider.

Ph. 03-5461211

Website: www.dia.govt.nz/diawebsite.NSF/wpg_URL/Services-Lottery-Grants-Index?OpenDocument

Wheelchair Assessments and maintenance



You have concerns about your child starting pre-school or school

The **Early Intervention Service** from Group Special Education will help you to access appropriate services and information. Available from the time your child is born until they are settled in school from the Ministry of education, Special Education Services. If you think your child needs extra support, talk to your GP, plunket, early childhood centre or an educationalist at the Nelson GSE (Special Education) office.19 Haven Road, Nelson.

Website www.teamup.co.nz Email enquiries.nelson@minedu.govt.nz
Ph. 03-5463470 Fax. 03-5391501

Parents from your support group may have ideas about which pre-schools and schools cater well for children with disabilities. They will help you work out how to make this transition smoothly.

Education Funding Systems

ORRS Funding

School-aged children who are already under the care of the Early Intervention Team may receive funding through the Ongoing and Reviewable Resourcing Scheme (ORRS), via the Ministry of Education, which provides teacher aide and therapy services at various levels from GSE.

SEG Funding

Children who do not qualify have to rely on the school special education grant (SEG). The SEG grant available for children varies widely from school to school as it is allocated according to the decile level of the school, not the number of children with special needs attending the school.

SHHNF Funding

The School High Health Needs Fund (SHHNF) provides teacher aide time for students with high health needs so that they can attend school safely. The fund is for students who require care and supervision in the medium or long term (i.e. for more than six weeks). The student's parent/caregiver, health care workers and educators agree on the level and type of care required in an Individual Care Plan. The eligibility criteria are however restrictive and not all children with high health needs who do not qualify for ORRS qualify for SHHNF.

You have health concerns for your child

General health issues

Discuss your child's health with your **Plunket Nurse** if you still have one.

See your **Doctor** or **Paediatrician**

Problems with the diet of your child

Ask your paediatrician or GP for a referral to the Hospital Dietetics department if you are concerned about nutrition or the diet of your child.

If there are difficulties around feeding then help may be available through the Child Development Services team. Ph. 03 546 1211

Referrals needed from Paediatrician or your GP.

Problems with teeth

See your school **Dental nurse** or **Dentist** first.

For information on what to do

Plunketline Ph. 0800933922

Healthline Ph. 0800611116

Whanau or Child Health plans

Whakatu Marae

Provide a nurse check, crisis counseling and help establish a whanau health plan.

Ph. 03-5484257

Te Korowai Trust

Can provide Well child checks. whanau ora health plans, assistance to get to appointments, support when attending services, social work support for parents, budget advice.

Ph. 03-5475958



You have transport issues

Need Financial Assistance to attend appointments?

The Ministry of Health (Health Pac) may provide travel assistance

For registration forms, see –

Your paediatric secretary Ph 03 5461210 ,

The Patient Travel Co-ordinator at the information desk, Nelson Hospital Ph. 035461919

or HealthPAC, Ph. 0800-281222 Option 2

Claim Forms must be signed and stamped for each visit

Criteria

If you 1. travel more than 80 km one way per visit (for a child)

2. visit a specialist 22 or more times in 2 months

3. visit a specialist 6 or more times in 6 months and travel more than 25 km one way per visit (for a child)

4. are a community services card holder and travel more than 25 km one way, per visit (for a child)- (Your child will qualify for a community services card if they have a child disability allowance).

Transport to appointments

St Johns ambulance can transport people to appointments if there is no one else to help.

Ph. 0800 000606

Email: enquiries@stjohn.org.nz



Also **Te Korowai Trust** and **Whakatu Marae** may be able to help if you are desperate and access their services.

Te Korowai Trust- Ph. 035475958

Whakatu Marae Ph. 03 5484257



The Bus also does a bus run to the Hospital.

Ph.03 5394107

Transport to School

The Ministry of Education is responsible for the safe travel of students to and from school. They recognise that some students travelling to school in a vehicle may require support or equipment to ensure their safety and comfort during the journey.

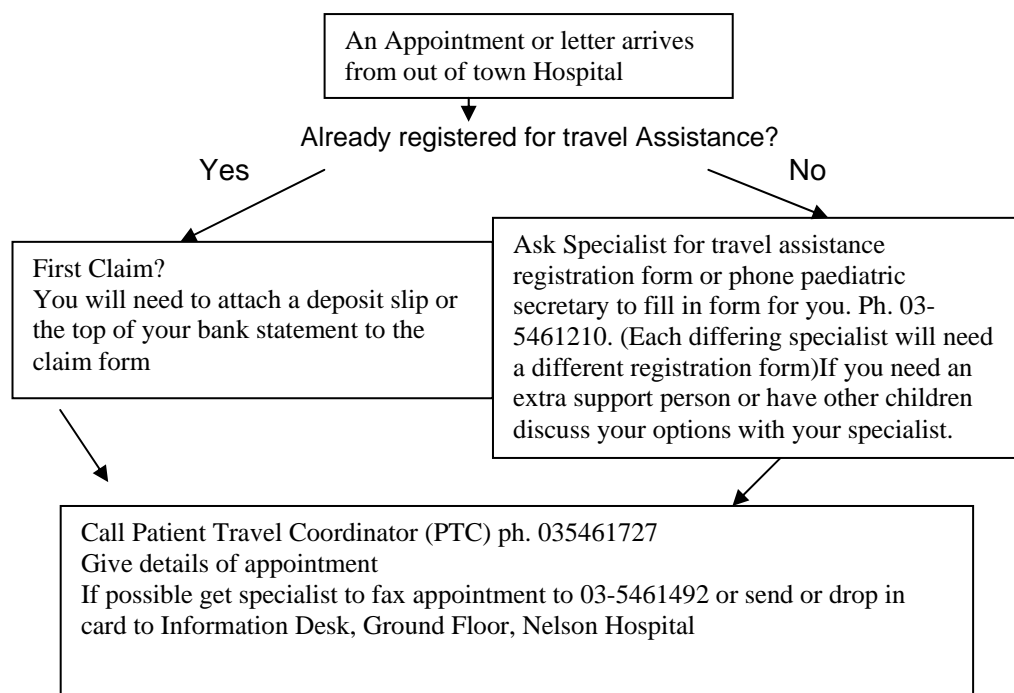
SESTA is the Special Education School Transport Assistance scheme.

For further information about School Transport Assistance, a series of fact sheets can be found on the Ministry of Education's website

www.minedu.govt.nz/goto/schooltransport

Enable or ACC may be contracted by the Ministry to provide equipment to meet your child's needs in this area.

If you have an appointment at another hospital away from Nelson



If you have a babysitter or family member who is willing and able to care for your pre-schooler in their home, then **Linmark services** can provide training and support. Your carers may be able to receive pay as a registered early childhood provider under the Work and Income criteria, by receiving their services, as they provide an individualized programme for your child and do regular check-ins with your carers.



Ph. 0800546627 Website: www.linmark.co.nz

Mental health issue

If your child or any of your family has a mental health issue- then talk to your GP or ring the Child and Adolescent Mental Health Service.

Ph. 03-5461230

Te Rapuora Health Services and Te Kahui Hauora o Ngati Koata

can also help you and your whanau if you are experiencing difficulties.

Te Rapuora -Ph. 03 5469997

Te Kahui Hauora o Ngati Koata- Ph. 03 5468018



You are struggling to cope.

Struggling with grief

Presbyterian Support Services (Family Works) have trained counselors available for a minimal charge.

Ph. 03-5469812

Manuka House has a free counselor.

Ph. 03-5482509

Skylight

Are a national support and training organisation for people experiencing grief.

Website: www.skylight.org.nz

Child Development Services

Have grief resources. The social worker may be available for support as well.

Ph. 03 5461884

Need help to access respite in order to be able to cope?

Your paediatrician could refer you to **Support Works** for a needs assessment which would assess how much respite they would fund.

Ph. 0800 244 300

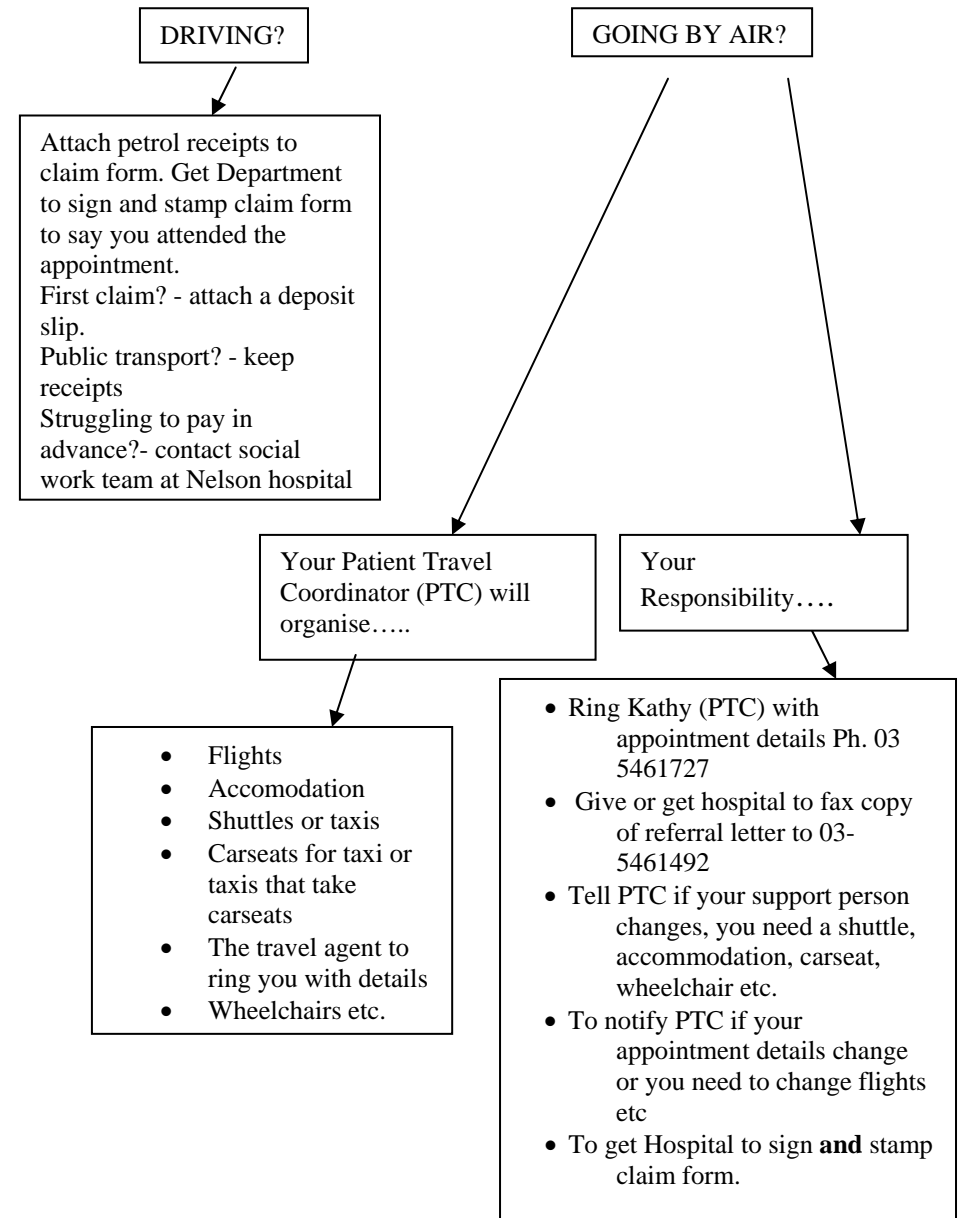
Care solutions are the nominated providers of respite in the Nelson area for children with disabilities. They have trained carers who will look after your child in their home.

Parents can find their own carers, as well, who can be paid via support works e.g. grandparents, teacher aides, friends, extended family.

IDEA Services

If your child has an *intellectual disability* then you may be entitled to support through IDEA services, who have a residential house called Trolove. This is funded through Support Works.

Other Carers



Accommodation Information and Options

Ronald McDonald Houses- no cost. (Arranged through PTC). If full- discuss other options with Kathy (PTC). Each region has different reimbursement rates. Ph. 03 5461727

Maori Options
Maori whanau can contact Tui- (Te Pukenga Hauora) She can put you in touch with Maori accommodation options for you and your whanau at various hospitals.
Ph. Tui 027277415
Email: Tui.Boyd@nmhs.govt.nz

Any concerns or further questions?

- Contact referring specialist or their secretary for advice
- Contact your Patient Travel Coordinator Ph. 03 5461727
- Ph. 0800 HealthPAC (0800 281 222 press 2)

After Hours Contact Number- Phone Nelson Hospital switchboard- they should be able to help. Ph 03 5461800

Mobility Parking Permits may be available for those people whose children are unable to walk unaided for 200 metres. Validation is needed by GP. Phone the number below or call in for an application.

CCS- 65 Trafalgar St
Freephone 0800CCSCALL – 0800227055
Ph. 03-5484479

Difficulties keeping your child in car seat etc.

Talk to your occupational therapist

Fifeshire Foundation

If you are experiencing financial hardship then you may be able to apply to the Fifeshire Foundation for a hardship grant.

<http://www.fifeshire.co.nz/>

Ph. 03-5469670 for details.

Applications need to be on the 20th of each month.



Lottery Grants

The Lottery Individuals with Disabilities Subcommittee makes grants to people with mobility and communication related disabilities for the purchase of vehicles, scooters and other disability equipment.

Website: www.dia.govt.nz/diawebsite.NSF

Halberg Trust

The Halberg Trust Sport Opportunity Programme is committed to ensuring people with a disability can participate in inclusive sport and active leisure within their community.

Phone Sports Tasman

Kim Williems

P O Box 1302

NELSON

Ph: 03 546-7910 Fax: 03 546-3300

email: sportopportunity@nel.sporttasman.org.nz

A Glasses Subsidy may be available for your child if they are under 15years old

To qualify:

- * Child must be under 16 at date of examination (cut off is 16th birthday)
- * Child or parent must have a current Community Services Card or the child must have a current High User Health Card
- * Subsidy covers \$281.25 towards glasses and eye examinations.

Contact your Optometrist or Ophthalmologist or view criteria on Enable Website.

Website: www.enable.co.nz

You need help working out what you are entitled to

Your **Child Development Services Field Worker, Te Kahui Hauora o Ngati Koata Trust worker or Family Start** worker can help you access help in this area.

Support Works

Your Paediatrician can do a referral to Support Works who are employed by the Ministry of health to undertake needs assessments for people with disabilities (NASC). They will determine how much **respite care, personal care support** or home support your family is entitled to. Ask your paediatrician whether you are eligible.

Ph. 0800 244 300 or 03 546 3980, www.nmdhb.govt.nz/SupportWorks.aspx

Occupational Therapist

Your Occupational Therapist can do some assessments for modifications to your home, aids you may need and support for day to day activities. Ask your Doctor or paediatrician for a referral.

Child Disability Allowance

Non-means tested payment of \$42.11 (per week, non-taxable at 1 April 2009) that can be made to the parent or guardian of a seriously disabled child who lives at home and requires constant care and attention.

This means your child can also get their own community services card which can help with getting National Travel assistance and cheaper doctors visits.

Disability Allowance

This allowance reimburses people for on-going regular costs they incur because they have a disability. There is an income test that must be met.

The amount paid depends on a person's costs

Contact: Your local Work and Income office for forms.

Ph. 0800559009 for appointment

Website: www.workandincome.govt.nz/get-assistance/extra-help

Your paediatrician may give you forms as well.

You want a support group or to help others in the same situation

CCS Disability Action

- have a child, youth and family Service co-ordinator who can provide support for you and your family



Contact: Jenny on 03-5484479

Parent 2 Parent

Provides support for parents, caregivers, whanau who have children and family members with disabilities, health impairments or special needs. They can 'match' you with parents who have similar challenges or experiences and run coffee mornings for parents.

They run a training course for parents interested in supporting other parents of children with disabilities which covers communication skills, grief issues and resources within the disability sector.

Website www.parent2parent.org.nz

Email nelson@parent2parent.org.nz

PO Box 1164

Nelson 7040

Ph. 03-5468973

Tollfree 0508-236236

PARENT to PARENT
NEW ZEALAND



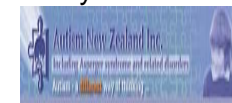
"Empowering parents, caregivers and whanau who have children and family members with disabilities, health impairments or special needs through support and the provision of information"

Autism NZ

Run support groups. Parents of children with autism giving support to other parents meet at Devilles café on New St. on the last Tuesday of each month.

Contact: Jill Hounsell

Ph. 03-5432465



Dyspraxia Support Group

For families of those children with dyspraxia there is a coffee morning support group in Nelson.

Contact: Convenors Maggie Williams Ph. 03-5403274

Karen Hunt

Ph. 03-5403342

Early Intervention Playgroup

CCS run a playgroup for 0 to 5 year olds on Wednesday mornings which includes an educational component but also gives you the opportunity to catch up with other parents of children of disabilities.

Ph. Nicky Berkett 03- 5486840

New Zealand Organisation for Rare Disorders

Provides a comprehensive database of disorders and who to contact for support.

Website www.nzord.org.nz

PO Box 38-538, Petone

Ph. 04-5667707



Strengthening Families

A way of providing better coordinated support for families/whanau who are already working with 2 or more agencies. It gets everybody together so you can work together towards best outcomes for your child and family.

To organise one, ask one of the agencies you are already working with to assist you or contact the Nelson Strengthening Families Coordinator.

Vonnie Ph. 03-5391170

Email: sf@nelsonpho.org.nz



Disability Action

If you would like to petition government over issues affecting your child and would value support, then contact Disability action.

Website: www.ccsdisabilityaction.org.nz

Also : www.ihc.org.nz



Sibling Support NZ

Sibling Support Programme is run through Parent 2 Parent. They run a weekend camp once a year for siblings of children with disabilities in various areas of NZ.

Contact : Parent 2 Parent NZ Inc.

PO Box 234

Waikato Mail Centre

Email: nelson@parent2parent.org.nz

You need an advocate

The **Disability Support Social Worker** from Child Development Services would be a good advocate or would assist you to find an appropriate advocate or support person.

Contact: Lisa Williams

Ph. 03-5461884 ext. 7884

CCS Disability Action have a child, youth and family worker who can advocate for you around funding, schools, GSE (Group Special Education), IEPs(Individual Education Plans) etc.

Contact :CCS Child Youth and family Service Coordinator on 03-5484479

Te Pukenga Hauora

For Maori Clients or whanau, who are in-patients at Nelson hospital please see Tui for cultural advocacy support.

Ph. 027277415

Email: Tui.Boyd@nmhs.govt.nz

IHC National Office have an advocacy centre which can provide support and advice on special education issues.

Contact:

Website www.ihc.org.nz



A **Health and Disability Advocate** is available through the Nelson Marlborough District Health Board.

Contact: Trish or Lee on 03-5444116

Health and Disabilities Commissioner

Ph. 0800112233